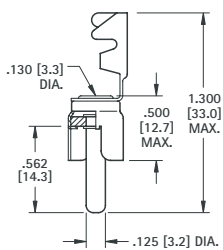


PHONO PLUGS

• Mates with .125 (3.2) diameter jacks

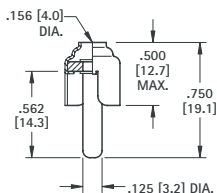
STRAIN RELIEF LUG CRIMPS TO WIRE INSULATION



MATERIAL:
Shell: Steel, Tin Plate
Pin: Brass, Nickel Plate

CAT. NO. 565

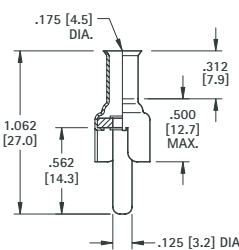
CONVENTIONAL TYPE



MATERIAL:
Shell: Brass, Nickel Plate
Pin: Brass, Nickel Plate

CAT. NO. 561

CRIMP OR SOLDER TYPE EXTRA LONG HANDLE



MATERIAL:
Shell: Steel, Tin Plate
Pin: Brass, Nickel Plate

CAT. NO. 567

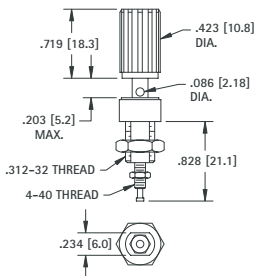
BINDING POSTS

All Keystone binding posts are designed to prevent accidental contact with current carrying parts. They feature a "limited opening" captivated head to insure safety. Ideal for audio circuitry, R.F. circuitry, oscilloscopes, power supplies and various other applications.

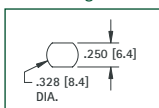
These multi-purpose binding posts feature high current rating, captivated heads and anti-rotation stud mounting.

Note: Binding Posts accept .175" (4.5) Banana Plugs, .080" (2.08) Tip Plugs, Spade Lugs, Alligator Clips, Wires and EZ hooks.

STANDARD BINDING POST



Mounting Detail

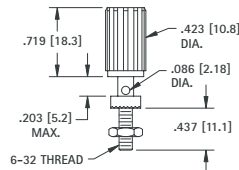


MATERIAL:
Stud: Brass per QQ-B-626
Plating: Silver Plate
Insulation: Nylon
Current Rating: 15 Amps
Stud to Panel Capacitance: 3.3 pF Nominal

For panels up to .281 (7.1) thick

| CAT. NO. | COLOR |
|----------|-------|
| 7004 | RED |
| 7005 | BLACK |

UNINSULATED BINDING POST

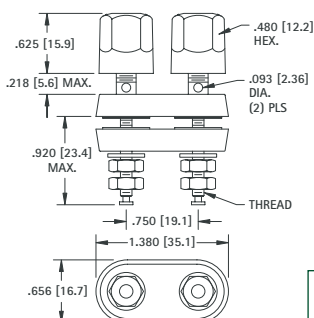


MATERIAL:
Stud: Brass per QQ-B-626
Plating: Nickel Plate
Insulation: Nylon
Current Rating: 15 Amps, 1000V AC Working

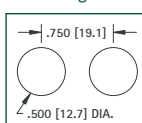
For panels up to .313 (8.0) thick

| CAT. NO. | COLOR |
|----------|-------|
| 7006 | RED |
| 7007 | BLACK |

STANDARD DUAL HEX HEAD



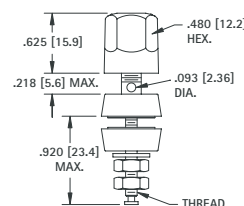
Mounting Detail



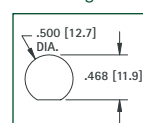
MATERIAL:
Stud: Brass per ASTM B-16.
Insulation: Nylon
Current Rating: 30 Amps, 1000V AC Working

| GOLD PLATE | | NICKEL PLATE | |
|------------|--------|--------------|--------|
| CAT. NO. | THREAD | CAT. NO. | THREAD |
| 4108 | 8-32 | 7018 | 8-32 |
| 4109 | 10-32 | 7019 | 10-32 |

STANDARD HEX HEAD



Mounting Detail



MATERIAL:
Stud: Brass per ASTM B-16.
Insulation: Nylon
Current Rating: 30 Amps, 1000V AC Working

| GOLD PLATE | | | NICKEL PLATE | | |
|------------|--------|--------|--------------|--------|--------|
| CAT. NO. | THREAD | COLOR | CAT. NO. | THREAD | COLOR |
| 4096 | 8-32 | RED | 4091 | 8-32 | RED |
| 4097 | 8-32 | BLACK | 4092 | 8-32 | BLACK |
| 7016 | 10-32 | RED | 4093 | 10-32 | RED |
| 7017 | 10-32 | BLACK | 4094 | 10-32 | BLACK |
| 7023 | 10-32 | WHITE | 4198 | 10-32 | WHITE |
| 7024 | 10-32 | YELLOW | 4199 | 10-32 | YELLOW |

MARKING
 A
 PHONO PLUGS & BINDING POSTS
 HEAD
 O.D.
 THREAD